

NON-ANIMAL-BASED SAFETY ASSESSMENT: WITHIN REACH OR OVER-SOLD?

17th Annual Cefic-LRI Workshop

18-19 November 2015

Le Plaza Hotel, Brussels

LRI WEBSITE COMMUNICATION



[Contact](#) www.cefic.org [Members portal](#)

Advanced search

- LRI research programme
- Funding Opportunities
- LRI Projects
- LRI Toolbox
- News & Events

[Home](#) [About](#)

A commitment to responsibility

[READ MORE](#)



A unique industry initiative

LRI is a global industry programme that aims to advance approaches for the scientific assessment of the safety of chemicals and improve our understanding of the potential health and environmental risks.

[LEARN MORE](#)



16th Cefic-LRI Annual Workshop 2014

19 Nov. > 20 Nov. 2014

[LEARN MORE](#)

Register for updates

Sign up to receive emails regarding LRI Projects, News and Events.

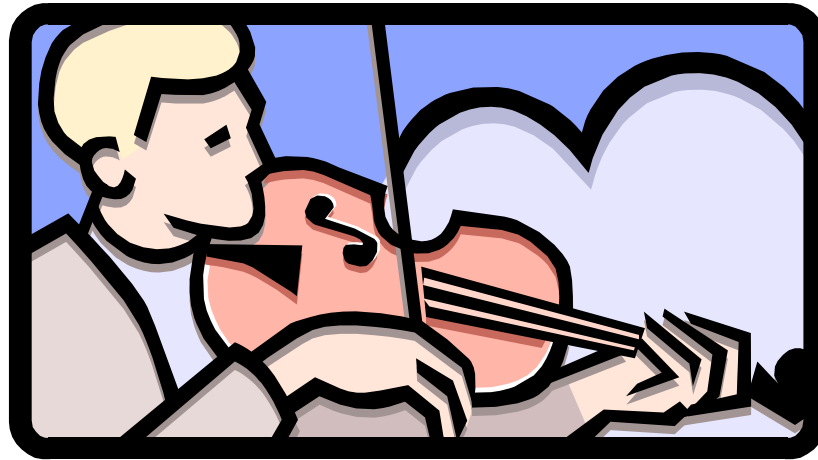
[REGISTER NOW](#)

Acknowledgements

- Workshop Chair: Stuart Marshall (Unilever, SIG chair)
- Sessions chairs: Yves Verschueren (Essenscia), Bruno Hubesch (Cefic), Ian Kimber (ESAP)
- Speakers + Posters presenters
- Workshop Organizers:
Stuart Marshall (Unilever)
Alan Poole (ECETOC)
Burkhard Flick (BASF)
Bruno Hubesch (LRI)
- Communication and **logistics**:
Maud Bertolino (Cefic) Maria Andriellou (Cefic)
Andreea Udrea (Cefic) Esther Agyeman-Budu (Cefic)



THE END



Thank you !